



Solomon Data International Corporation Investor Presentation 2022

November 22 , 2022



SOLOMON DATA INTERNATIONAL CORPORATION

Disclaimer

The following presentation and its associated contents contain forward-looking statements regarding operational strategy, financial results and business forecasts, which are based on internal information of the Company and observations of the overall external environment.

Forward-looking statements should not be understood or construed as guarantees of future performance, as such projections involve factors including but not limited to market demand, price fluctuations, competitive situation, global economic activity, foreign exchange rates, and other uncertainties beyond the control of the Company that may cause actual results to differ.

Information presented herein are based upon the Company's assumptions of the future outlook to date, and are not representative, explicit or implicit, of correctness, completeness or reliability. Should there be subsequent changes in circumstances, the Company does not assume any responsibility to update or review forward-looking statements.

The contents of this presentation should not be copied, edited, revised, shared or repurposed in any way without the knowledge or consent of the Company.

Agenda

- ※ **Company Profile**
- ※ **Financial Results**
- ※ **Outlook & Strategy**
- ※ **Q&A**

Agenda

※ **Company Profile**

※ Financial Results

※ Outlook & Strategy

※ Q&A

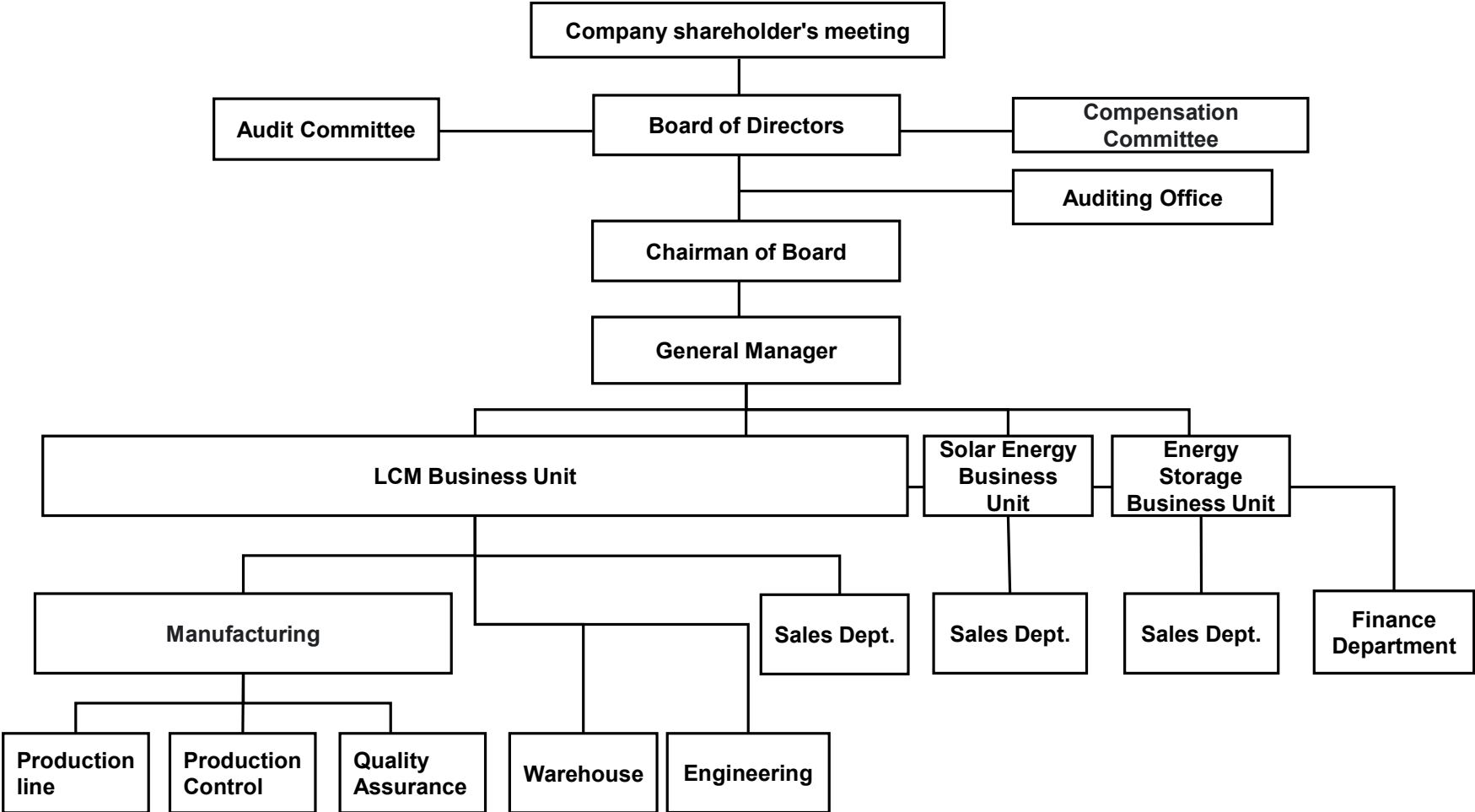
Company Profile

- Established : 1990 (formerly Data International)
- Publicly Listed : 2000 (5432.TWO)
- Capital : NT\$2.07 billion
- Core Businesses : LCD module assembly and sales 、 Energy Equipment

Solomon Taipei HQ



Organization Chart



Agenda

※ Company Profile

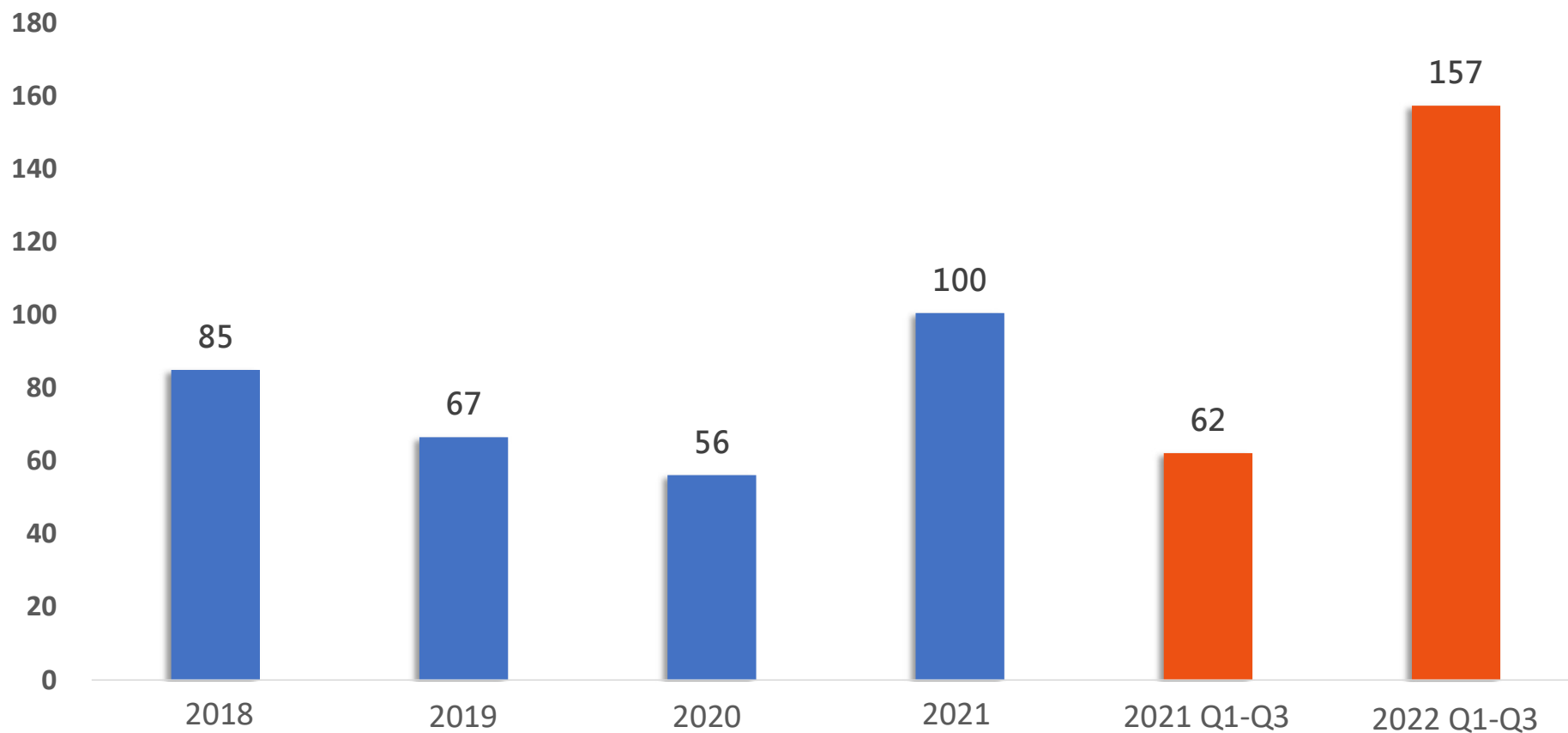
※ **Financial Results**

※ Outlook & Strategy

※ Q&A

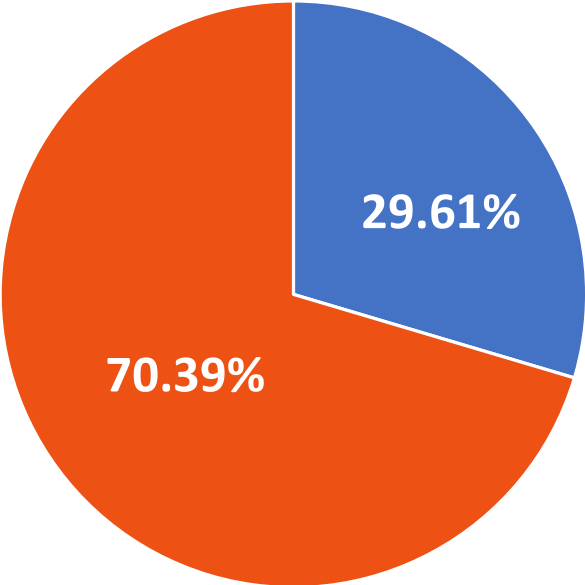
Financial Results -Revenue

Unit: NT\$ million



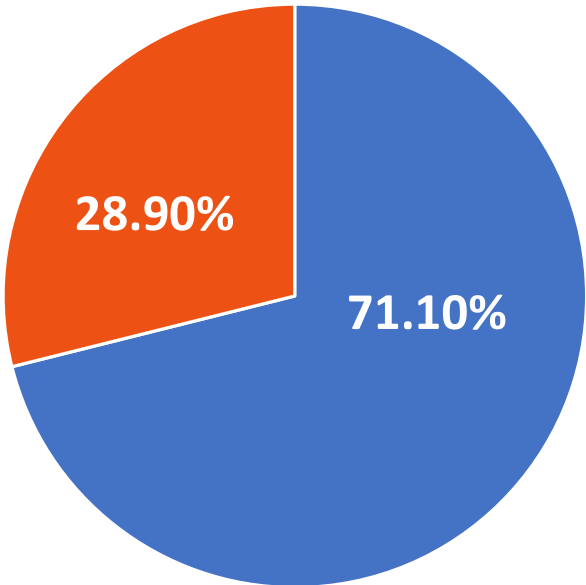
Financial Results - Sales Breakdown (by BU)

2022 Q1-Q3



■ LCM ■ Energy

2021



■ LCM ■ Energy

Financial Results - Consolidated Income Statement

Unit: NT\$'000

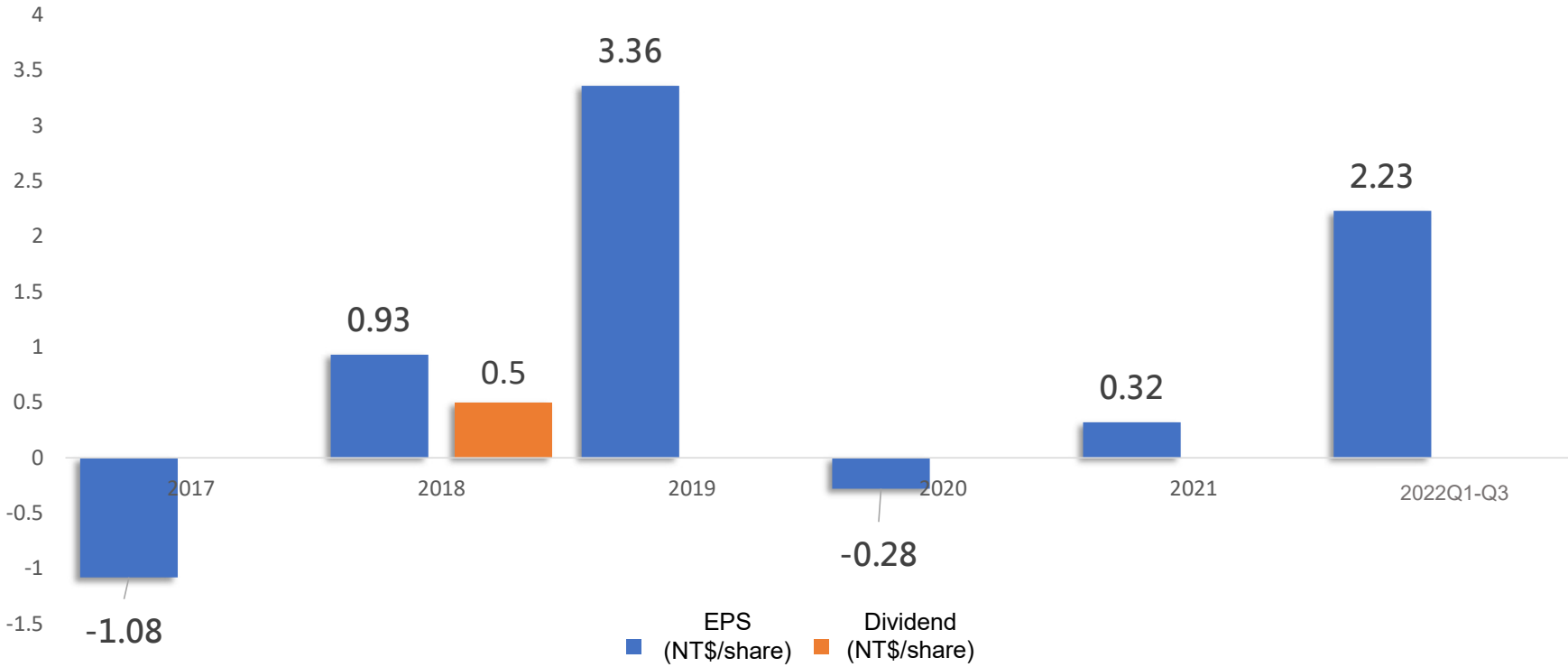
Particulars	2022 Q1-Q3		2021 Q1-Q3		YoY %	2021	
	\$	%	\$	%		\$	%
Revenue	157,339	100	62,153	100	153	100,480	100
Gross profit	30,937	20	13,241	21	134	21,458	21
Operating expenses	(15,306)	(10)	(9,594)	(15)	60	(14,190)	(14)
Operating income	15,631	10	3,647	6	329	7,268	7
Interest income	1,219	1	711	1	71	872	1
Other income	325	0	44	0	639	122	0
Other gains and losses	28,182	18	(3,741)	(6)	853	(1,501)	(1)
Finance costs	(10)	0	(14)	0	29	(20)	0
Share of profit (loss) of associates and joint ventures accounted for using equity method	1,080	0	(595)	(1)	282	(32)	0
Total non-operating income and expenses	30,796	19	(3,595)	(6)	957	(559)	0
Income before tax	46,427	29	52	0	89,183	6,709	7
Income tax	(322)	0	(10)	0	3,120	(10)	0
Net income	46,105	29	42	0	109,674	6,699	7
EPS (NT\$)	2.23		0.00		109,742	0.32	

Financial Results - Consolidated Balance Sheet

Unit: NT\$ '000

Accounting Title	September 30, 2022		December 31, 2021		September 30, 2021	
	\$	%	\$	%	\$	%
Cash and cash equivalents	187,852	43.45	126,660	33.97	121,485	32.40
Current financial assets at amortised cost	9,525	2.20	96,208	25.80	123,168	32.84
Accounts and notes receivable, net	43,185	9.99	27,011	7.24	24,370	6.50
Current inventories	62,784	14.52	47,904	12.85	34,327	9.15
Other current assets	1,783	0.41	2,232	0.60	2,181	0.58
Non-current financial assets at fair value through profit or loss	14,681	3.40	18,857	5.06	18,724	4.99
Investments accounted for using equity method	86,880	20.09	25,268	6.78	24,705	6.59
Property, plant and equipment	518	0.12	1,961	0.53	2,443	0.65
Right-of-use assets	1,032	0.24	2,678	0.72	3,226	0.86
Investment property, net	20,593	4.76	20,593	5.52	17,398	4.64
Other non-current assets	3,543	0.82	3,467	0.93	2,982	0.80
Total assets	432,376	100.00	372,839	100.00	375,009	100.00
Current contract liabilities	3,973	0.92	2,273	0.61	4,247	1.13
Accounts payable	37,507	8.67	26,477	7.10	33,222	8.86
Other payables	6,159	1.42	3,972	1.07	3,926	1.05
Other current liabilities	1,497	0.35	2,641	0.71	2,644	0.71
Non-Current liabilities	-	-	341	0.09	946	0.25
Total liabilities	49,136	11.36	35,704	9.58	44,985	12.00
Total equity	383,240	88.64	337,135	90.42	330,024	88.00
Total liabilities and equity	432,376	100.00	372,839	100.00	375,009	100.00
Financial indicators						
Current ratio	621%		848%		694%	
Debt ratio	11%		10%		12%	
Debt to equity ratio	13%		11%		14%	

Financial Results - EPS & Dividend Policy



Agenda

※ Company Profile

※ Financial Results

※ **Outlook & Strategy**

※ Q&A

Outlook & Strategy —LCD Modules

Product	
Existing Lines	Standard Monochrome (TN & STN) LCM ∙ Small-medium size colored TFT module ∙
	Customized display modules (OEM)
2023 new focused business	Medium-large size colored TFT module

Application

Owing to traditional Monochrome LCM application shrinking, new target on promoting color-TFT LCM and its widely application areas.

- **HMI/Industrial**
- **Health Care**
- **Outdoor**
- **Amusement/Gaming**
- **POS/KOISK**
- **VEHICLE**

Outlook & Strategy - Energy Equipment

		Product	
		Current Product Line	2023 New Product Line
Distributor of SolarEdge	Current Product Line	Residential Single Wave Inverter	
		Commercial Three Phase Inverter	
	2023 New Product Line	Residential Single Wave Inverter with Battery Storage Solution	
		Commercial Three Phase Inverter with Battery Storage Solution	
		Large Scale Ground Mounted Three Phase Inverter with Battery Storage Solution	

Application

Following government's green energy requirement, strategically insert our products into different types of solar market.

- **Heavy commercial electric users - Who are required to generate 10% electricity using green energy**
- **Government Buildings - Schools, public facilities**
- **Large scale ground mounted solar systems, Fishery and electricity symbiosis systems**
- **Commercial and Industrial Buildings**
- **Single Family Residential**
- **Solar Plus Battery Storage System**

Agenda

- ※ Company Profile
- ※ Financial Results
- ※ Outlook & Strategy
- ※ **Q&A**

Thank You

